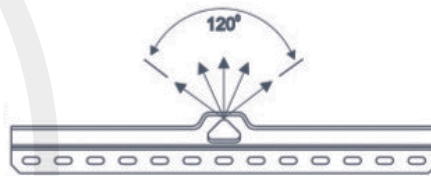
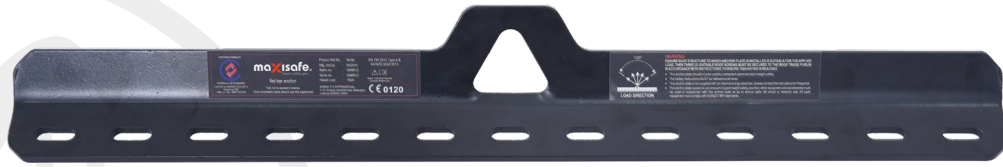


Maxisafe Flat Bar Anchor



Maxisafe T-Bar roof anchor provides quick and easy installation for roof access onto sheet metal roofs. Fits to edge of the roof sheeting and easily secured using existing screws and holes in the sheeting.

Features & Benefits

- Certified to AS/NZS 5532:2013
- Rated for Single use only (15kN)
- Only suitable for sheet metal roofing with a minimum of 0.42m thickness in the following profiles, provided roof sheets are secured in place with roof screws as per manufacturer's instructions; Custom orb; Trimdek
- It is important to ensure that the structure in which the product is being applied to has sufficient strength to sustain the applied load.
- Always refer to the User Instruction Manual prior to use

Anchor Standards

In recent times there has been some confusion in the Standards for Anchors. The above information has been derived AS/NZS1891.4:2009 -Selection use and Maintenance. Reading this standard will provide much information leading to the correct application of Industrial Fall Arrest Systems. In providing information on applications for Anchorages this section provides the strength requirements as above. It does not provide methodology of testing – this information is contained in other Standards.

- AS/NZS5532:2013 Manufacturing requirements for single point anchors
- AS/NZS1891.2:2001 Horizontal lifeline and rail systems (this standard has provision for Proprietary Systems).
- AS/NZS1891.3:1997 Fall Arrest Devices (refer Section 2.3 Anchorage Lines)

Maxisafe Anchorages

- Whilst currently small the MAXISAFE range of ANCHORS can the safety required to many applications.
- Must be used in conjunction with an Energy Absorbing device
- Temporary anchor for any worker that needs to access rooftops such as Roofers, plumbers, servicing technicians, installers, painters

Product Details

Product Code: ZCL500
Pack Qty: 1
Carton Qty: Each

Standards



AS/NZS5532:2013
BMP 716722

Also Available



HD Confined Space Harness
ZBH924H



T Bar Edge Anchor
ZTA918



15m Rope Line w/- Adjuster and S/A
ZRL-15



2m Web Mini Block
ZMIC02



HD Roofers Kit
ZRK03H

[CLICK HERE FOR PRODUCT SPEC](#)

there's safe and there's Maxisafe.